

Chesapeake Public Schools

RESPONSIVE RETURN



FAMILY CHOICE WINDOW

JULY 9-21, 2020

MAKE YOUR CHOICE USING ParentVUE[®]

powered by Synergy[®]

Our goal is to bring all students back to school, and it is our hope that the COVID-19 situation will improve allowing us to return to normal operations. Until that time, a great deal of uncertainty remains. We believe it is important to consider the needs of all of our students and the unique situations each family faces during this time.

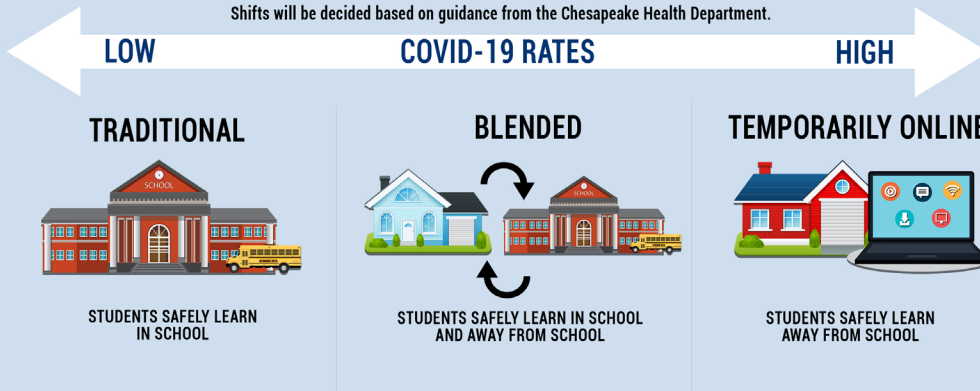
So we are providing a choice for our families for the 2020-21 school year:

- Option 1: On-Campus Continuum where we will provide as much on-campus time for your child as is permitted by the health guidelines in place at any given time.
- Option 2: Chesapeake Online, a 100% online learning model that will allow families to keep their children learning at home if that is the best option for their circumstances.



OPTION 1: ON-CAMPUS CONTINUUM

Shifts will be decided based on guidance from the Chesapeake Health Department.



OPTION 2: 100% ONLINE



Students who choose to enroll commit to receiving instruction through the Chesapeake Online program through February 2, 2021.

Visit our website www.cpschools.com to learn more about each option.



The Chesapeake Public School System is an equal educational opportunity school system. The School Board of the City of Chesapeake also adheres to the principles of equal opportunity in employment and, therefore, prohibits discrimination in terms and conditions of employment based on race, sex, national origin, color, religion, age, or disability.